

Agilent GPC/SEC Software Sample GPC Analysis Report



Agilent Technologies

Sma Rev

Workspace Details

Workspace name Poly lactide
Location C:\ProgramData\Agilent Technologies\GPC\Workspaces\Poly lactide\
Comments
Created by Administrator at 13:44:31 on 15 June 2015

Sample Properties

Sample name Sma Rev
File name ICF_27_07_2020-0007.sample
Collected by GPC at 13:08:12 on 27 July 2020
Instrument name Instrument 1

Column Calibration Details

Name PSty 2020 June
Created by GPC at 13:15:08 on 15 June 2020
Last modified by GPC at 13:16:38 on 15 June 2020
Comments GPC Column Calibration created 15 June 2020 by GPC
GPC Column Calibration amended 15 June 2020 by GPC
GPC Column Calibration amended 15 June 2020 by GPC

Calibration Type	Narrow Standard	Curve Fit Used	3
Calibration Curve	$y = -0.002444x^3 + 0.107x^2 - 1.916x + 16.88$		
High Limit MW RT (mins)	11.06667	Low Limit MW RT (mins)	17.30000
High Limit MW (g/mol)	299400	Low Limit MW (g/mol)	1260
Flow Rate Marker Name		Flow Marker RT (mins)	0.00000
K (Input) ((10e-5) dL/g)	14.100		
Alpha (Input)	0.700		
Residual Sum Of Squares	0.00155214	Corrected Sum Of Squares	5.26776
Coeff. Of Determination	0.999705	Standard Y Error Estimate	0.0176189
Linear Correlation Coeff	-0.999574		

Column Calibration Data Points

Point	Peak Max RT (mins)	MW	Log MW	Point in Use?	Percent Error
1	11.06667	299400	5.48	Yes	3.40
2	11.66667	151700	5.18	Yes	-4.99
3	12.60000	66350	4.82	Yes	-1.58
4	13.26667	38100	4.58	Yes	0.64
5	14.10000	19880	4.30	Yes	4.91
6	14.88333	9920	4.00	Yes	-0.30
7	15.71667	4920	3.69	Yes	-1.45
8	16.55000	2360	3.37	Yes	-3.33
9	17.30000	1260	3.10	Yes	2.29

Analyst:

Date:

Checked By:

Date:

Agilent GPC/SEC Software Sample GPC Analysis Report



Agilent Technologies

Processing Parameters

Method Last modified by Administrator at 13:44:30 on 15 June 2015
 Using Flow Rate Correction No
 Mark-Houwink K ((10e-5) dL/g) 14.100
 Mark-Houwink Alpha 0.700
 Concentration Detector Used in Analysis RI
 Injection volume (µL) 100.00
 Flow rate (mL/min) 1.00

MW Ranges Method

Calculate MW Ranges No

Percentage Fractions Method

Calculate Percentage Fractions No

Results

Analysed by GPC at 15:36:53 on 27 July 2020
 Comments

Molecular Weight Averages

Peak	Mp (g/mol)	Mn (g/mol)	Mw (g/mol)	Mz (g/mol)	Mz+1 (g/mol)	Mv (g/mol)	PD
Peak 1	5133	4716	5260	5866	6527	5772	1.115

Peak Information

	Start (mins)	End (mins)
Baseline region 1	2.91667	8.58333
Baseline region 2	29.18333	37.45000
Peak 1	14.58333	16.61667

Peak Trace Information

Peak	Trace	Peak Max RT (mins)	Peak Area (mV.s)	Peak Height (mV)
Peak 1	RI	15.68333	1491.392	25.147
Peak 1	VS DP	15.68333	1504.790	20.359
Peak 1	VS IP	15.38333	24.873	0.655
Peak 1	LS 90°	15.63333	430.558	7.986
Peak 1	LS 15°	15.35000	270.964	7.789

Analyst:

Date:

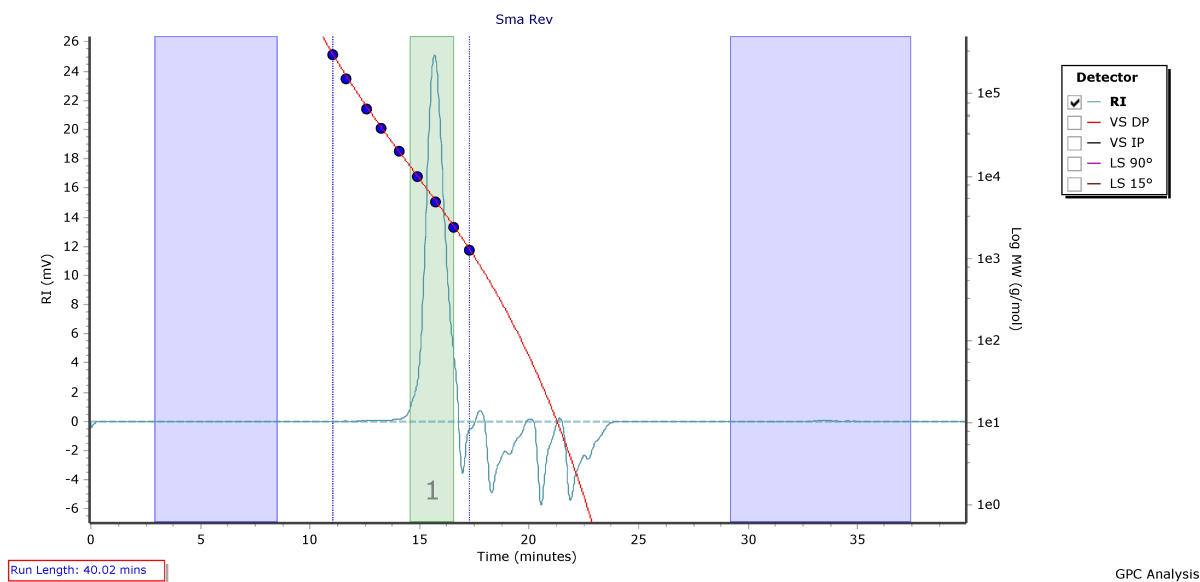
Checked By:

Date:

Agilent GPC/SEC Software Sample GPC Analysis Report



Chromatogram Plot



Analyst:

Date:

Checked By:

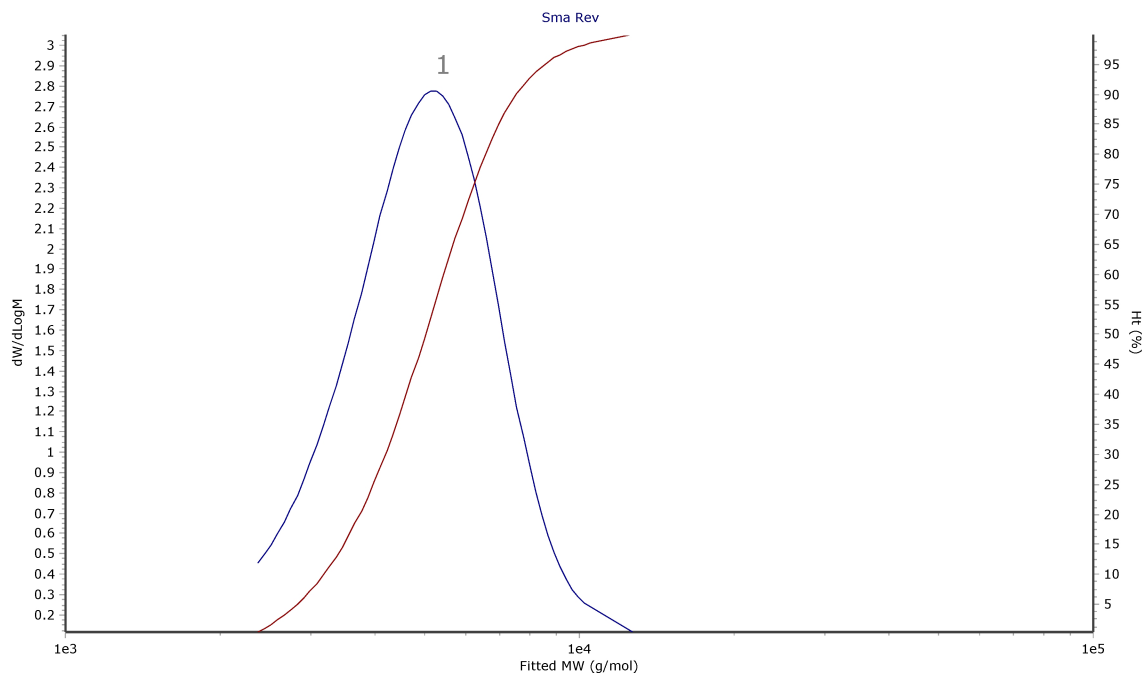
Date:

Agilent GPC/SEC Software Sample GPC Analysis Report



Agilent Technologies

Distribution Plot



Analyst:

Date:

Checked By:

Date: